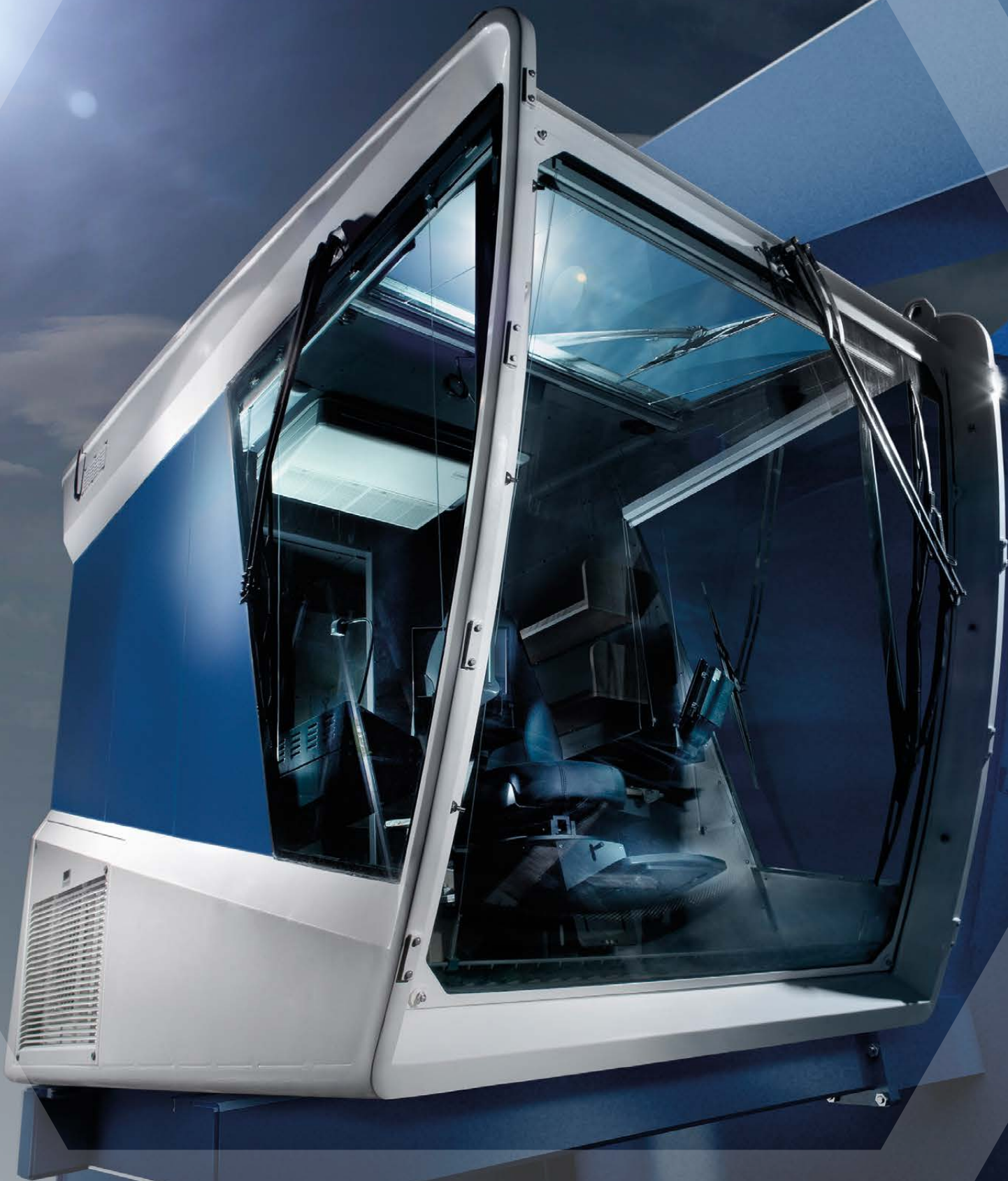




## HIGH-TECH CABINS

SYSTEM SOLUTIONS FOR ALL REQUIREMENTS



# HIGH-TECH CABINS BY KML

SYSTEM SOLUTIONS OF THE HIGHEST LEVEL

KML is one of the technological leaders in the development and manufacture of special cabins. For many years, our name has been synonymous with highly innovative system solutions in cabin construction, several of which are patented. Our high-tech cabins are deployed across the world in a wide range of application areas.

This portfolio in a variety of industries forms the basis for our comprehensive knowledge and experience in the construction and manufacture of cabins. In doing so, we implement the latest standards that set industry benchmarks, for example with our **“plug & play”** system. In addition, we supply connection-ready cabins that can be connected to the vehicle or crane with little effort and full functionality. It goes without saying that we respect all customer specifications.

Come and see for yourself.

» CAN BE FOUND ON ALL  
CONTINENTS AND IN  
VARIOUS INDUSTRIES. «

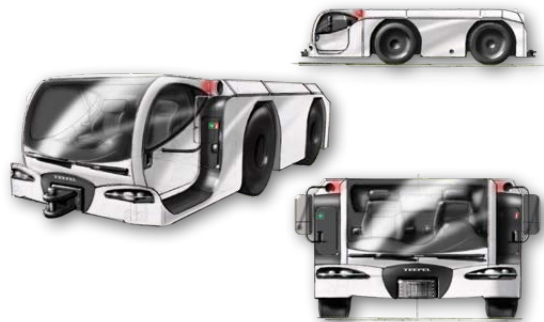
# KML CABINS OFFER ADDED VALUE

INNOVATION GIVES US A HEAD START

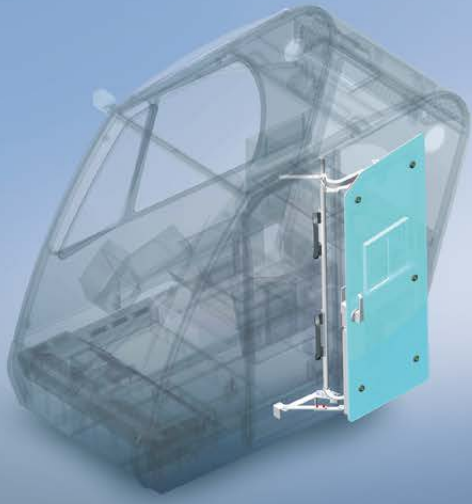
No two cabins are the same. The requirements for modern cabin systems have evolved dramatically in recent years. KML has kept pace, consistently offering advanced solutions for all fields of application.

Numerous patents, including for a swing door, a swivel seat, a windscreen wiper unit with increased contact pressure, the eyecab cabin, and the conflex cabin, provide evidence of our development objectives. Functional assemblies made from high-quality materials, the manufacture of hybrid bodywork, composite elements and components in glass-fibre reinforced plastic (GRP) are part of the standard service at KML, along with modern connection technologies such as bonding, riveting and aluminium welding. The combination of high-quality materials and flawless workmanship sustainably extends the lifetime of our cabins, thus creating added economic value.

During use, optimal ergonomic aspects guarantee ideal working conditions.



IDEA + DEVELOPMENT = INNOVATION  
EXPERTISE THAT MOVES YOU FORWARD.



Swing door



Swivel seat



Windscreen wiper unit

» OUR VISION IS OUR DAILY GOAL: PROVIDING  
THE OPTIMAL CABIN FOR EACH TASK. «





▶ THE TOUGHEST DEMANDS ON PEOPLE AND MACHINES LEAVE NO ROOM FOR WEAKNESSES. ◀



# KML CABINS

## »MADE IN GERMANY«

QUALITY WITHOUT COMPROMISE

KML MAKES THE DIFFERENCE

When competing in challenging markets, you must be able to rely on the latest technology. This is why we consistently provide the “**Made in Germany**” seal of quality for the manufacture of our cabins. At our company’s site in Lahr, our qualified employees manufacture innovative cabins on the basis of the highest quality standards. Over the years, we have continuously optimised our production processes and expanded our manufacturing depth in order to supply cabins from a single source.

A modern and highly efficient flow line production permits a lead time of just three days. Yet we still remain highly flexible, even concerning last-minute change requests. Our customers around the world appreciate our reactivity.



MADE IN GERMANY

QUALITY MAKES THE DIFFERENCE.

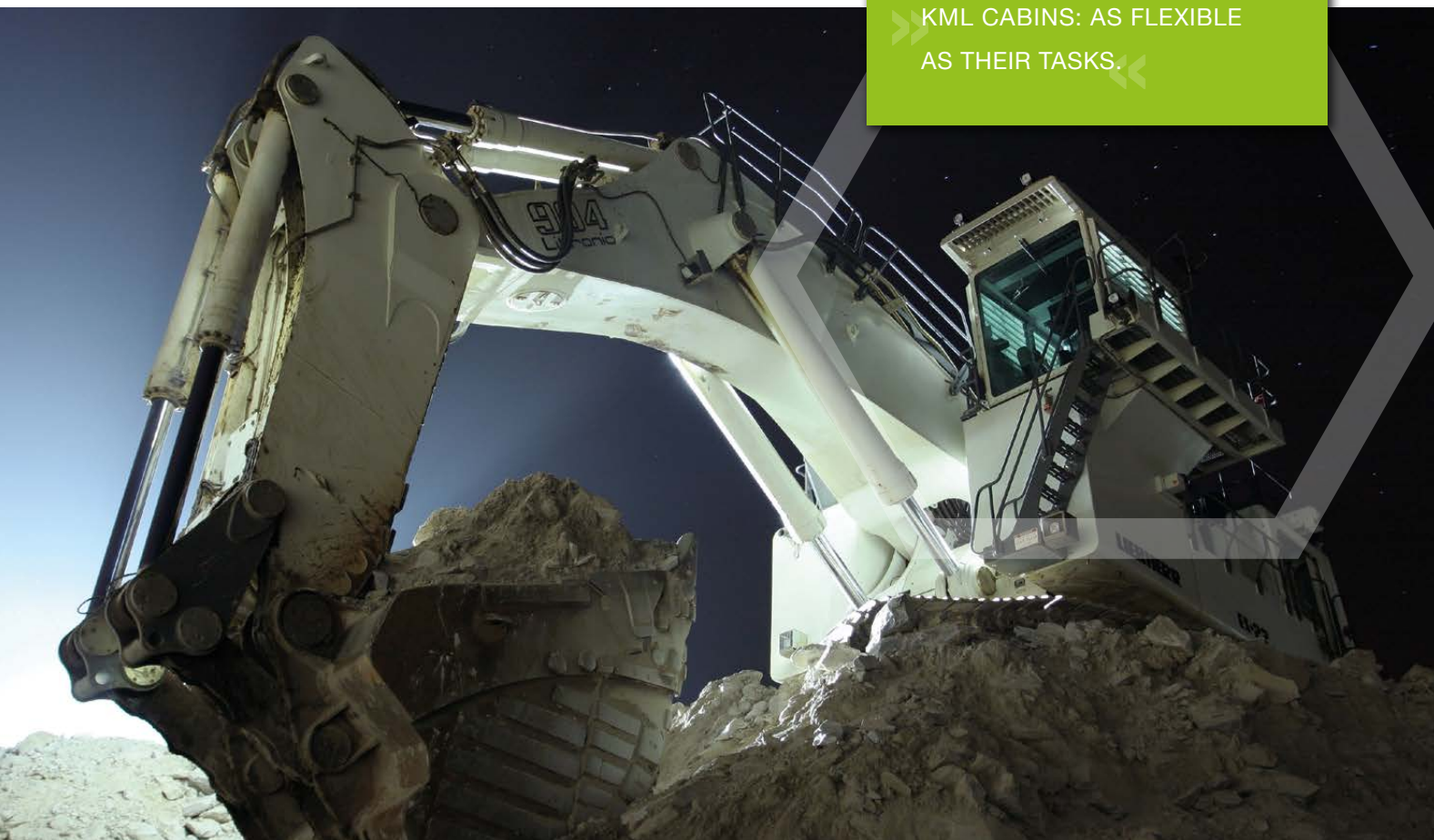
# INDUSTRY-SPECIFIC SOLUTIONS

CABINS FOR EVERY APPLICATION

With our comprehensive expertise in cabin construction, we know exactly what it takes. KML offers technically advanced solutions for all fields of application. In order to create compact and technically advanced system solutions, we produce a complete range of cabins.

Our experience gained in various industries and on all continents is a considerable asset. Each KML cabin, regardless of its intended field of application, represents the latest standards in terms of ergonomics, technology and material properties.

➤ KML CABINS: AS FLEXIBLE  
AS THEIR TASKS. ◀







### MOVING GOODS AND OFFSHORE

Whether on land or out at sea:  
you can rely on cabins by KML.

### CONSTRUCTION OF SPECIALISED SYSTEMS

“There’s no such thing as impossible”:  
special cabins for specialised systems

### CRANE SYSTEMS

Cabins by KML: advanced technology and an  
ideal working environment

### CONSTRUCTION VEHICLES AND EARTH MOVING

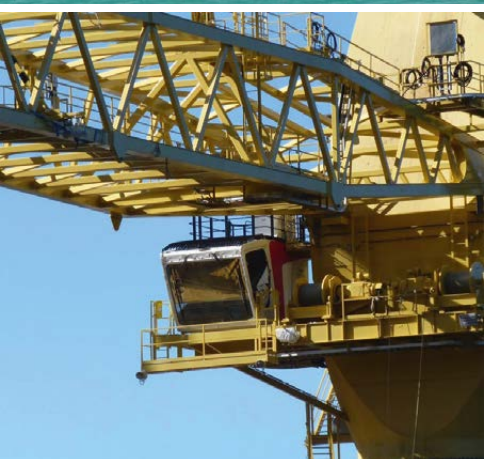
Cabin systems designed for the toughest long-  
term operation.

### VEHICLE CABINS

Innovative solutions with modern designs



© Swift Drilling



# PARTNERSHIP

## JOINED EXPERTISE FOR KML

At KML GmbH, family businesses and technical expertise in the premium sector come together. Dr.-Ing. E.h. Martin Herrenknecht, founder and CEO of the Herrenknecht AG in the neighboring Schwanau, the South Tyrolean cabin manufacturer Lochmann Kabinen GmbH and the Spohn + Burkhardt Group from Blaubeuren are joint owners of KML GmbH. [www.kml-kabinen.de](http://www.kml-kabinen.de)

As the world's leading technology driver in mechanized tunnelling, Herrenknecht develops state-of-the-art technical solutions for the construction of all types of underground infrastructure. Today, Herrenknecht's high-tech tunnelling machines and methods are used in all geologies and fields of application. [www.herrenknecht.com](http://www.herrenknecht.com)

Lochmann Kabinen GmbH has been successful in the development and production of driver cabs for decades based on quality and innovation. Lochmann Kabinen GmbH has achieved a leading position on the European cab market thanks to its expertise and close customer communication. [www.lochmann.eu](http://www.lochmann.eu)

Spohn + Burkhardt has been developing and producing ergonomic driver systems and joysticks, control stands and resistors in custom or series production for over 100 years. These high-tech products are used in all industries. A strong sales and service structure including subsidiaries in India and China emphasize the international focus. [www.spobu.de](http://www.spobu.de)



**HERRENKNECHT**



**Tunnelling Systems**





# CABINS FOR EVERY APPLICATION

KML GMBH

Industriestrasse 19, 77933 Lahr

Phone: +49 7821 9476-0, Fax: +49 7821 9476-100

E-mail: [info@kml-kabinen.de](mailto:info@kml-kabinen.de), [www.kml-kabinen.de/en/](http://www.kml-kabinen.de/en/)